

Editor: Richard Halfhide
Editorial Assistant: Sophie Collingwood
Production Manager: Nicola Stuart
Advertisement Production Manager: Stephen Bell
Subscriptions & Publications Manager: Tasharna Francis
Publisher: Dmitry Ponkratov

Advertising Sales: J P Media Services
Email advertising: jpayten@jpm mediaservices.com
Telephone: +44 (0)1737 852135

Published by:
The Royal Institution of Naval Architects
Editorial Office:
8-9 Northumberland Street
London, WC2N 5DA, UK
Telephone: +44 (0) 20 7235 4622
Telefax: +44 (0) 20 7245 6959
E-mail editorial: editorial@rina.org.uk
E-mail production: production@rina.org.uk
E-mail subscriptions: subscriptions@rina.org.uk

Printed in Wales by Stephens & George Magazines.

The Institution is not, as a body, responsible for opinions expressed in *The Naval Architect* unless it is expressly stated that these are the Council's views.

Registered charity No. 211161

© 2020 The Royal Institution of Naval Architects. This publication is copyright under the Berne Convention and the International Copyright Convention. All rights reserved. No part of this publication may be reproduced, stored in a retrieval system or transmitted without the prior permission of the copyright owner. Permission is not, however, required to copy abstracts of papers or of articles on condition that a full reference to the source is shown. Multiple copying of the contents without permission is always illegal.

A 2020 subscription to *The Naval Architect* costs:

NAVAL ARCHITECT (10 issues per year)			
12 months	Print only†	Digital Only*	Print + Digital
UK	£203	£203	£259
Rest of Europe	£213	£203	£268
Rest of World	£228	£203	£284

†Includes p+p

*Inclusive of VAT

The Naval Architect Group (English Edition)
Average Net Circulation 9,942 (total)
1 January to 31 December 2019
ISSN 0306 0209



7 Editorial comment

Equality should matter to maritime

8-15 News

- 8-10 News
- 12 News Analysis
- 14-15 Equipment News

16-43 In-depth

- 16 **China Ship News** | World's largest LNG bunkering vessel launches in China
- 18-19 **Japan** | Japanese joint project explores shipping's road to 2050
- 40 **Research** | Maritime Research and Innovation UK
- 41-43 **Green ships** | What does it mean to be a retrofit ship of the future?

45 Diary



16 World's largest LNG bunkering vessel delivered

41 Retrofitting for shipping's green future

20-39 Features

Feature 1 Engines & propulsion

- 20 Wärtsilä led consortium combines technologies for fuel efficiency
- 22-25 How much is enough? EEDI rules and 'minimum propulsion power'

Feature 2 Container ships

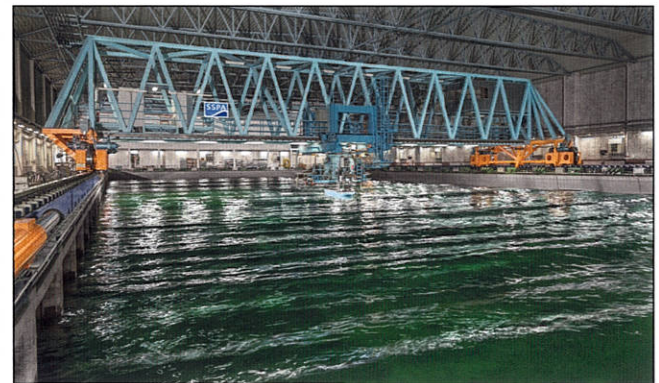
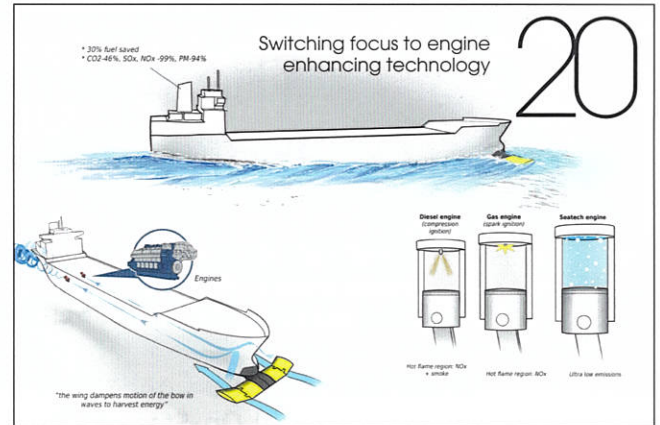
- 26-28 Container lashing: taking the strain for a bigger problem
- 29-31 Ultimate strength performance of a damaged container ship

Feature 3 Classification & regulation

- 32-33 Six months on: has shipping met the mark with the IMO 2020 0.50% sulphur fuel switchover?
- 34 CSR software updates support industry for vessel design
- 35 Innovation in the age of Covid-19
- 36-37 Ammonia: the good, the bad, and the unknown

Feature 4 Communications

- 38 It's time for a change of mindset on cyber risk compliance
- 39 Standalone navigation alternatives are vital to ship safety



22

A guide to EEDI and minimum propulsion power

Digital Editions

The Naval Architect is published in print and digital editions. The current and archived digital editions may be read on PC, iPad or other touchpad.

Visit <http://www.rina.org.uk/Naval-architect-digital.html> to read the digital editions, or download the free RINA Publications App.



26

Boxship incident raises lashings questions

